

View Point

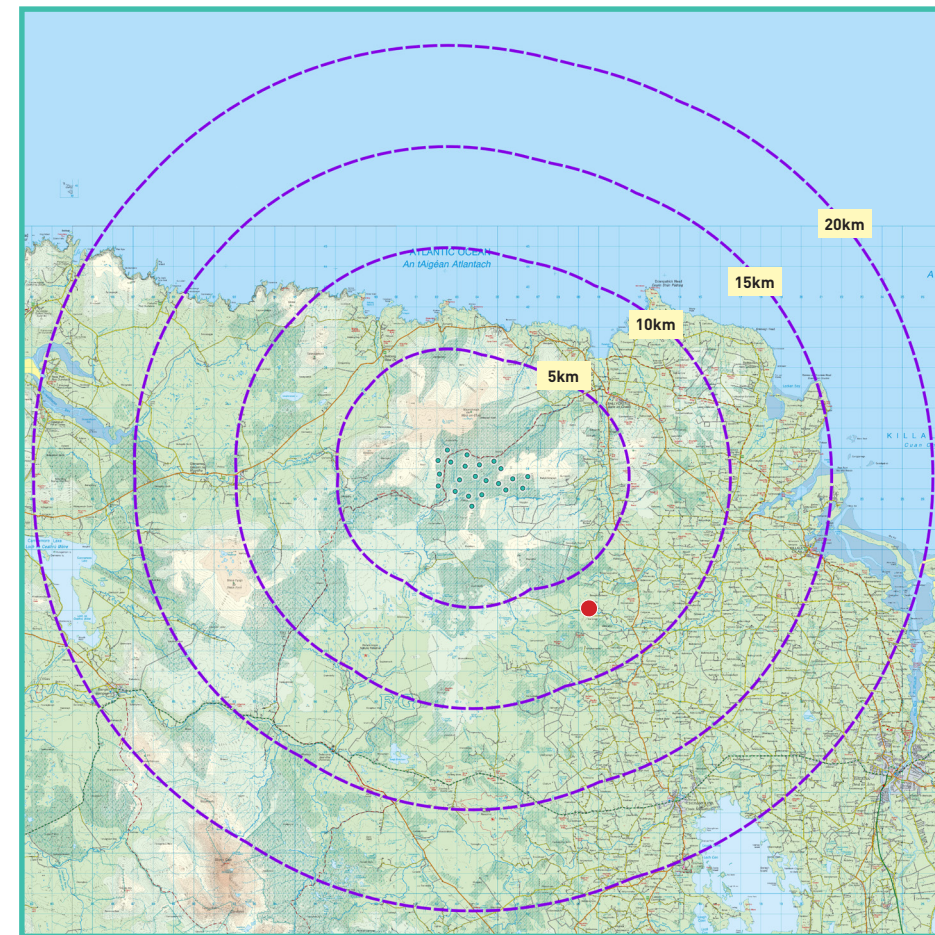
5

Carnclagh

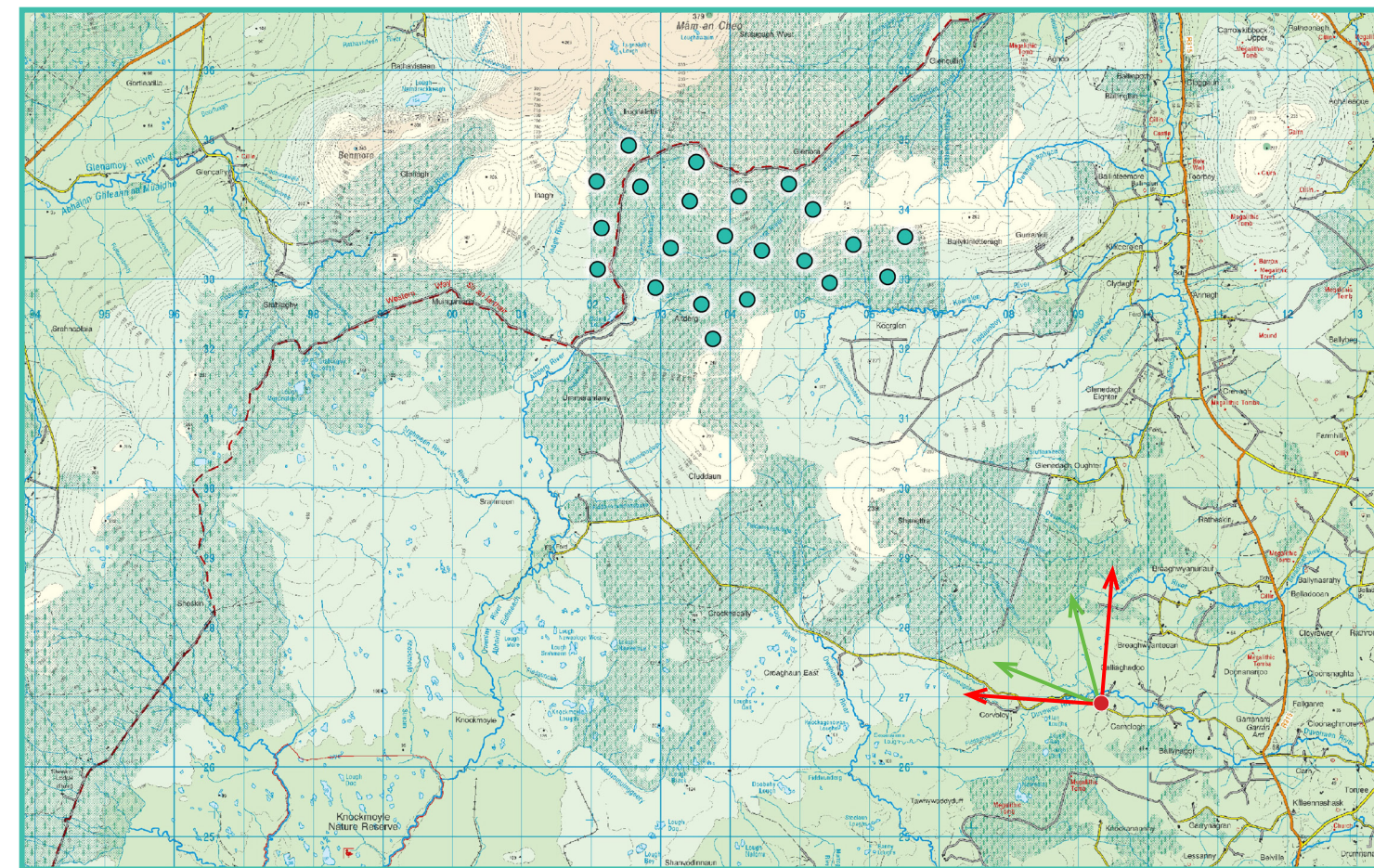
Photomontage 5

View from a local road in the townland of Carnclagh, approximately 7km southeast of the nearest proposed turbine.

View point grid reference	509395(E); 826826(N)
Date of image taken	29.09.2021
Time of image taken	10:12
View point elevation	76m
Angle of Views	90° / 53.5°
View Direction (Image Centre)	323°
Horizontal extent of proposed turbines	26°
Distance to nearest proposed turbine	7km (T16)
Number of proposed turbines visible	7/22
Turbine Hub Height	99m
Turbine Tip Height	180m
Turbine Rotor Diameter	162m
Montage Type	Type 4* Photomontage / Photowire / Survey / Scale Verifiable
Camera & Lens	Canon 5D Mark III / Full Frame Sensor with a 50mm Lens
Tripod	Manfrotto 190X extended to approx 1.5m.
Guidance	* Visual Representation of Development Proposals, Landscape Institute Technical Guidance Note 06/19, 2019
Map Licence	© Ordnance Survey Ireland. All rights reserved. Licence number CYAL50267517



View point relative to 20km radius.



View point relative to wind farm site.

90° View Extent



Detail of view point location.

Map Legend

Area shown in 90° view



Area shown in 53.5° view



View Point



Wireline Legend

Proposed Wind Farm

Proposed Met Mast

Existing Wind Farms

Permitted Wind Farms

Other Proposed Wind Farms

Prepared by

MKO
Planning & Environmental Consultants
Tuam Road, Galway.

Tel: (091) 73 56 11
E-mail: info@mkofireland.ie
Website: www.mkofireland.ie



Key Image at 120°

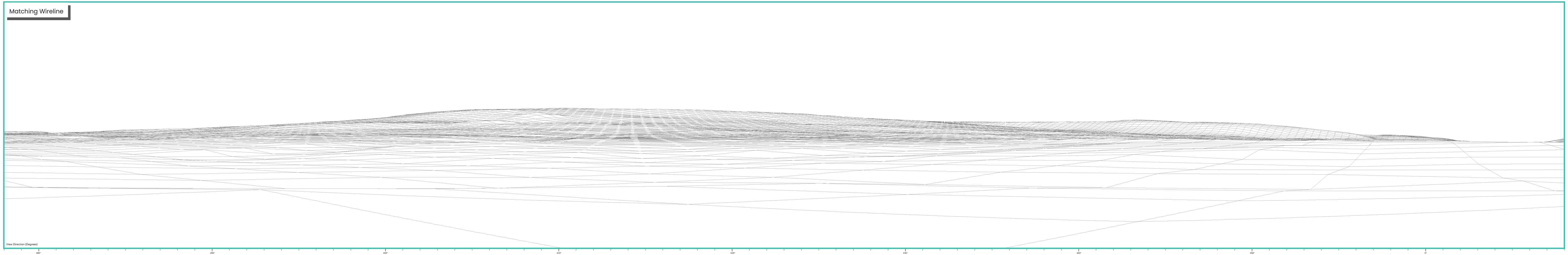


53.5° View Extent

Existing View at 90°



Matching Wireline

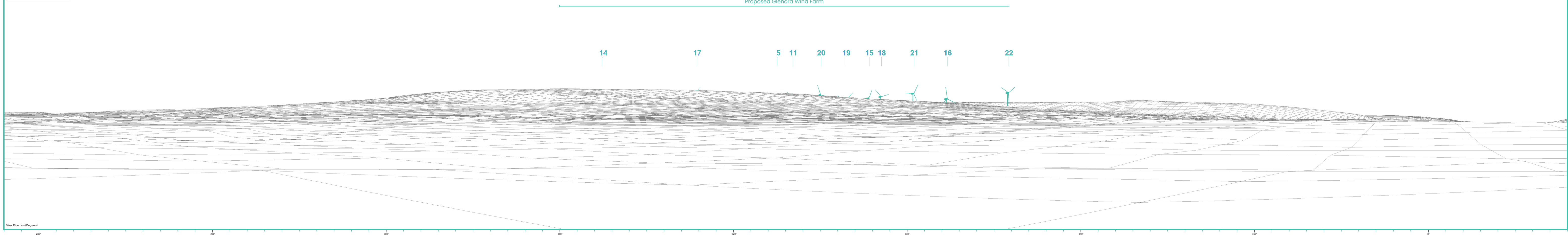


Proposed Photomontage with Cumulative at 90°



Matching Wireline

Proposed Glenora Wind Farm



Proposed Photomontage with Cumulative at 53.5°



View Direction (Degrees)

300° 310° 320° 330° 340°

26.5°

53.5°

0° Included Vertical Angle (18.2°) 9.1° 18.2°

Proposed Glenora Wind Farm

14

17

5

11

20

19

15

18

21

16

22

